



Image: [Kimberly Paynter/WHYY](#)

PROFESSIONAL PRECARITIES IN A TIME OF PANDEMIC: CROSS-NATIONAL PERSPECTIVES

A Reconceptualizing Early Childhood Education Webinar

18/19 NOVEMBER 2020 (DEPENDING UPON TIME ZONE)

18 November 2020: 10-12pm (South Africa); 9-11pm Central European Time (Germany, France, Scandinavia);
3-5pm Eastern Standard Time (US)

19 November 2020: 9-11am (New Zealand); 7-9am (Eastern Australia)

To Register [CLICK HERE](#)



Acknowledgement of Land and Welcome



Marek Tesar, Chair,
RECE Steering
Committee,
Associate Professor,
University of Auckland,
Aotearoa New Zealand

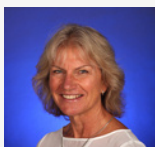
RECE Steering Committee:

Mimi Bloch, University of Wisconsin, Madison, USA
Tomas Ellegaard, Roskilde University, Denmark
Janice Kroeger, Kent State University, USA
Colette Murray, Technical University, Dublin, Ireland

Jonathan Silin, University of Toronto, Canada
Beth Blue Swadener, Arizona State University, USA
Mathias Urban, Dublin City University, Ireland

Panel 1: National Policy Responses to COVID-19

How well was/and is your country and the early childhood sector served by the policy response to COVID?



Sonja Arndt,
Lecturer, Graduate
School of Education,
University of
Melbourne, Australia



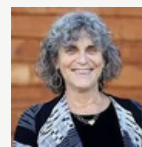
Nkidi Phatudi,
Associate Professor,
Early Childhood
Education, University of
South Africa (UNISA)



Mere Skerrett,
Senior Lecturer, Teacher
Education, Victoria
University of Wellington,
Aotearoa New Zealand



Mathias Urban,
Desmond Chair of Early
Childhood Education,
Dublin City University,
Ireland



Marcy Whitebook,
Director Emerita/ Senior
Researcher, Center for
the Study of Child Care
Employment, University
of California, Berkeley,
USA

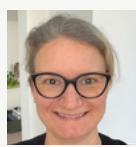
Moderator: Mark Nagasawa,
Bank Street College of Education, USA

Panel 2: Perspectives, Responses, and Organizing Strategies of Practitioners

*How has COVID-19 affected your work and how have you adapted your practices?
What forms of activism have you engaged in?*



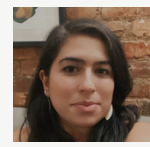
Lyn Wright,
Whānau Manaaki
Kindergarten
Association, Aotearoa
New Zealand



Rikke Wettendorff,
Danish Preschool
Teachers Union



Brooke Richardson,
Brock University,
Canada



**Juliana Pinto
McKeen**, Brooklyn
Coalition for Early
Childhood, USA

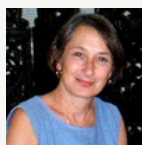
Moderator: Lacey Peters,
Hunter College, City University of New York, USA

Small Group Discussion

How would the early childhood profession/sector benefit from an international response?

Closing

Final thoughts and upcoming activities



Mimi Bloch,
RECE Steering
Committee,
Professor Emerita,
University of Wisconsin,
Madison



Beth Blue Swadener,
RECE Steering
Committee,
Professor,
Arizona State University

Webinar Planning Committee

Mimi Bloch
Tomas Ellegaard
Janna Goebel, Arizona State University
Janice Kroeger
Mark Nagasawa
Lacey Peters
Beth Blue Swadener
Technological & Graphic Design Support:
Bank Street College of Education